

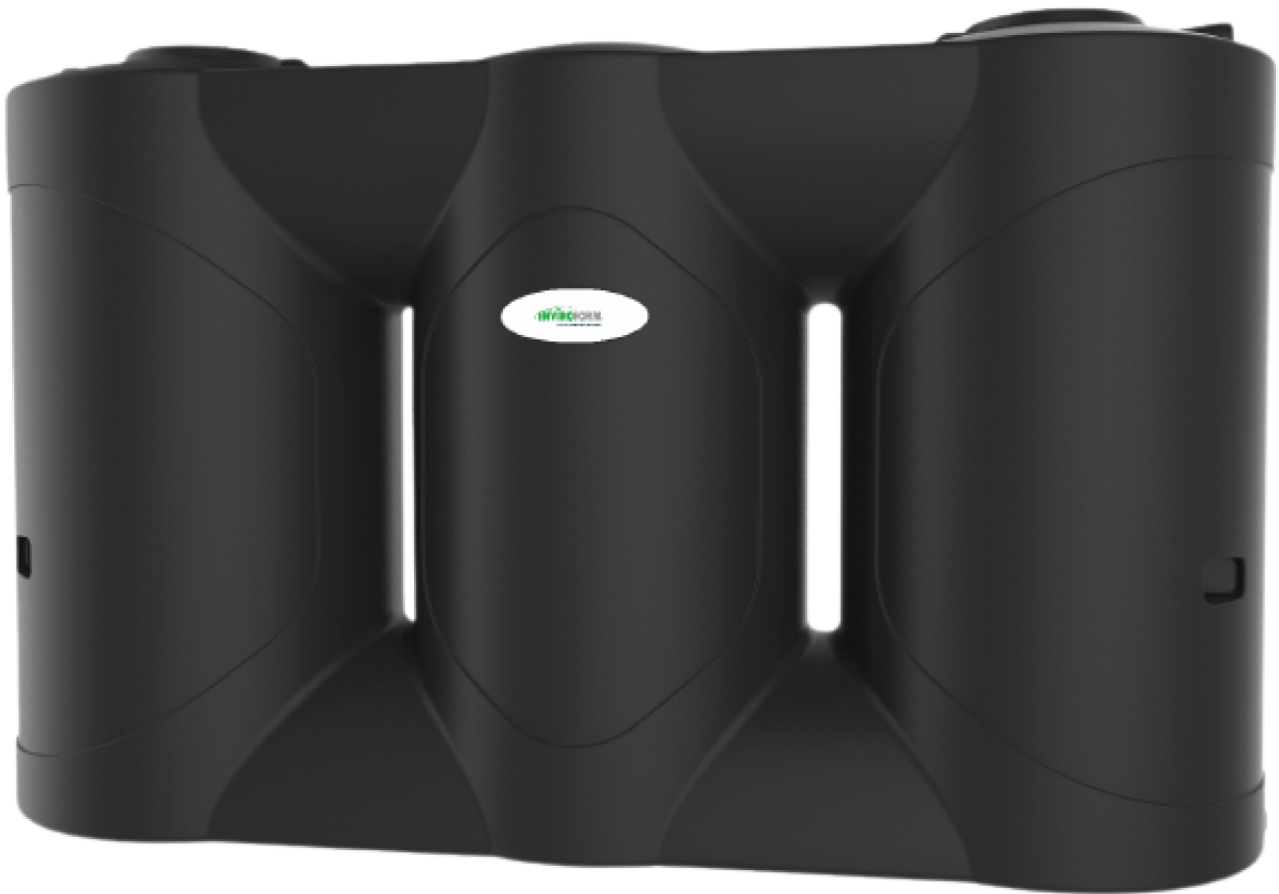
5,000ltr Slimline Rainwater Tank

Our 5000L Slimline Rainwater Tanks are commonly used for medium to large homes, usually when space is an issue, and a slim tank is needed.

Australia
ENVIROFORM
POLY AGRICULTURAL SOLUTIONS

SKU:
RWS-5000

DIMENSIONS:
3290L x 1020W x 2010H



SUPPLIED WITH:



400mm Leaf Sieve



90mm Overflow



25mm Ball Valve Tap



25mm Brass Tank Fitting

FEATURES:

- ✓ 400mm Leaf Sieve
- ✓ 90mm Overflow
- ✓ 25mm Outlet & Ball-valve Tap
- ✓ Self-Supporting Roof Design (no support poles are necessary)
- ✓ Extra thick walls for Maximum Strength
- ✓ One-piece Construction (no joints, seams or part-lines)
- ✓ Extra UV Protection
- ✓ 7 Year Warranty

OPTIONAL EXTRAS:



455mm Screw Access Lid



Water Level Indicator



Float Valve



Garden Pump